

4. Adjust or reposition the Lead Sled laterally to align the firearm's sights with the target. Adjust the height of the front rest until the correct elevation is achieved. Elevation adjustments are easily made with the Elevation Wheel, by slightly loosening the Center Post Lock, and rotating the Wheel to change the height of the front rest. Tighten the Center Post Lock when the correct elevation is attained. The Rear Elevation Foot can also be employed to raise or lower the rear of the Lead Sled to give added elevation adjustment. Tighten the Rear Elevation Foot Lock Nut against the Frame before proceeding.
5. Remove the firearm in order to weight the Lead Sled. Place filled shot bags on the tray of the Lead Sled. The tray will easily accommodate four 25 lb bags. Place the first two under the frame bar, side-by-side, crossways to the axis of the Lead Sled. The second two should also be placed crossways, but over the frame bar.
6. Return the unloaded firearm to its position on the Lead Sled. Verify that it is still pointed toward the target. If not, remove the firearm and maneuver the Lead Sled accordingly until the desired sight picture is achieved.
7. Load the firearm.
8. Position the firing shoulder solidly behind the rear rest and grasp the forearm with the opposite hand, pulling the firearm rearward to make certain the butt is securely seated in the rear rest.
9. Align the sights on the target. With the sights properly aligned, and while holding steadily, pull the trigger. The resulting lack of felt recoil will amaze you.

Warnings:



- The Lead Sled is not designed to be used as a "machine rest". Do not attempt to bolt down, or fasten to the shooting bench. Doing so will overstress the rest and will likely result in its failure, causing injury to the shooter or the firearm.
- Do not attempt to fire any firearm "remotely" from the Lead Sled. Heavy recoiling firearms will likely displace from the rest, causing damage to the firearm or injury to the shooter.

Limited Warranty

Every Caldwell product is warranted to be free of defects in materials and workmanship for a period of one (1) year from the date of original purchase. Caldwell will, at its option, repair or replace without charge, except for transportation costs, parts that fail under normal use and service when operated and maintained in accordance with our Instructions. This warranty does not apply to normal wear or to items whose life is dependent upon their use and care. This warranty is in lieu of all other warranties, expressed or implied and releases Caldwell, its affiliates, and its vendors from all other obligations and liabilities.

Instructions # 563795

Product # 820-216

A **Battenfeld** Technologies, Inc. Product

5885 W Van Horn Tavern Rd. • Columbia, MO 65203

Visit our web site at www.caldwellshooting.com

Revised: 2/04



The Lead Sled™



–Instructions for Assembly and Use–

Congratulations on your purchase of the Caldwell Lead Sled. Please read the following instructions carefully as they will help you in properly assembling your Lead Sled and guide you in its correct use.

Assembly Instructions

The Lead Sled comes to you partially assembled, but will require a few minutes for assembly of the front Cradle and the Tray. Final assembly of the Lead Sled is simple and straightforward, but please take the time to read and reread the instructions before beginning the process. Make sure you have all the following components: (Please note: We constantly work to improve our products. Some parts may vary slightly in appearance from those illustrated.)

- A. Rear Elevation Foot - #892-504
- B. Rear Elevation Foot Lock Nut - #193-503
- C. Frame and Rear Brace Assembly - #440-015 - Consists of:
 - 1. Welded Frame Assembly - #440-015
 - 2. Recoil Brace - #622-511
 - 3. Recoil Brace Support Tube - #380-297
 - 4. Recoil Brace Retention Screws, 8mm x 25 (4) - #575-824
- D. Shot Tray - #147-190
- E. Shot Tray Retention Screws, 5/16"-18 x 1-3/4" (4) - #763-352
- F. Shot Tray Retention Nuts, 5/16"-18 Nylock (4) - #570-769
- G. Front Leg Post (2) - #304-999
- H. Leg Retention Screws, 5/16"-18 x 3/4" (2) - #170-475
- I. Rubber Foot (2) - #597-586
- J. Cradle Plate - #599-814
- K. Cradle Plate Screw, 1/4"-20 x 3/4" - #333-812
- L. Center Post - #431-028
- M. Elevation Wheel - #252-322
- N. Nylon Thrust Washer - #847-710
- O. Center Post Locking Screw - #463-992
- P. Recoil Brace Slip Cover (with hook and loop strips) - #515-061
- Q. Double-Stick tape (2) - #199-785
- R. Socket Head Wrench Key - 3/16" - #253-194

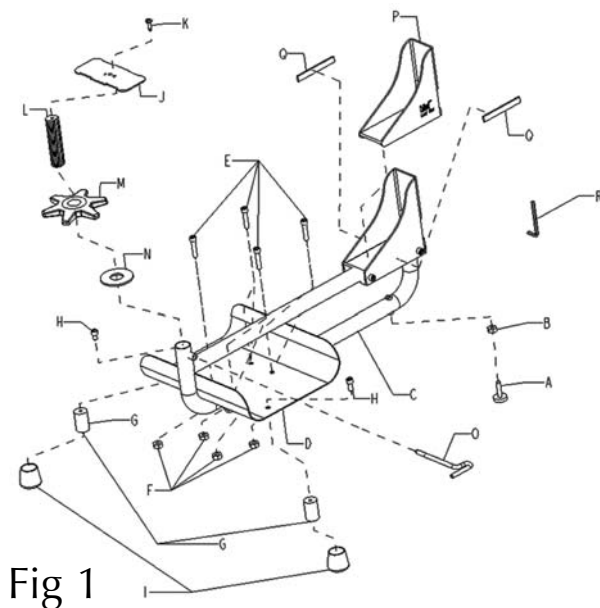


Fig 1

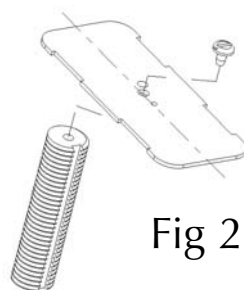


Fig 2

Tools Needed:

- Medium-size Phillips screwdriver
- 1/2" wrench or adjustable jaw wrench

Sequence of Assembly

Please read through all steps of assembly before beginning the assembly process. (See illustration for specific item positions.)

1. Thread the Rear Elevation Lock Nut (B) onto the threaded shank of the Rear Elevation Foot (A). Position the Nut at approximately the halfway point of the Foot shank.
2. Thread the Rear Elevation Foot into its corresponding mount at the bottom rear of the Frame and Brace Assembly (C) until the Nut makes contact with the Frame.
3. Slide the Shot Tray (D) between the upper and lower sections of the Frame with the 4 holes in line towards the front. Align the holes of the Tray with the holes in the Frame, insert four Shot Tray Retention Screws (E) through the Tray and the Frame, and secure on the underside with Shot Tray Retention Screw Nuts (F) using the 3/16" Socket Head Wrench (R) and a 1/2" wrench.
4. Insert Leg Retention Screws (H) through Tray and into Front Leg Posts (G). Secure with 3/16" Socket Head Wrench.
5. Slide Rubber Foot (I) over each Front Leg Post.
6. Attach the Cradle Plate (J) to the Center Post (L) with the Cradle Plate Screw (K) See Fig 2. The Cradle Plate features two alignment "dimples" stamped near the hole in its center. One dimple is positioned on the left-to-right centerline of the Cradle Plate, while the other is "offset" 30 degrees from the centerline. The Lead Sled utilizes the "on centerline" dimple to index the Cradle Plate to the Center Post. Align the groove in the Center Post with the dimple projecting downward while installing the screw. (Tighten securely with a Phillips screwdriver.) It may be necessary to rotate the Cradle Plate slightly in order to ensure its alignment with the frame before final tightening.
7. Start the Center Post Lock Screw (O) a few turns into its threaded hole in the Frame, but not far enough to interfere with the installation of the Center Post.
8. Thread the Elevation Wheel (M), beveled side toward the cradle plate, onto the bottom of the Center Post, approximately half its length.
9. Slip the Nylon Thrust Washer (N) over the bottom end of the Center Post, under the Elevation Wheel.
10. Insert the bottom end of the Center Post into its corresponding hole on the top of the Frame. Align the groove in the Center Post with the Center Post Lock Screw and turn the Lock Screw in just short of making contact with the bottom of the groove. This will allow the height of the Cradle to be adjusted. Tightening the Lock Screw will secure the Cradle in place.
11. Attach Recoil Brace Slip Cover (P) with hook and loop strips to the Recoil Brace. (The hook and loop strips allow for removal of the Slip Cover, should the need arise.)
 - a. Verify that the loop strips are joined evenly to the sewn-in hook strips at the lower inside edges of the Slip Cover.
 - b. Remove the backing from one side of the Double-Stick Tape (Q) and affix one piece of the Tape to the backside of each of the loop strips.
 - c. Carefully place the Slip Cover over the Recoil Brace, pulling it downward to ensure a snug fit.
 - d. Remove the remaining backing from the Tape.
 - e. Press the lower edges of the Slip Cover against the Brace to ensure that the Tape is firmly stuck to the sides of the Brace.
12. Attach appropriate front rest bag (sold separately) to Cradle Plate.

Instructions for use

1. Position the correctly assembled Lead Sled on your shooting bench with the rest in the direction of the target. (Can be used with either a sitting or stand-up bench.) Make sure surface is dry and free of debris.
2. Be sure that the Lead Sled is equipped with an appropriate front rest bag.
3. Place the unloaded rifle or shotgun on the Lead Sled, resting the forend on the front rest and the butt in the specially designed rear rest, the toe of the stock extending through the square hole in the rest.