

Instructions for use:

1. Rotate each Adjuster Foot until the points protrude about a half-inch through the bottom of the base legs. Leave the Adjuster Foot Lock Nuts loose.
2. Set the Rock BR on the shooting table or bench with the two front legs (those closest together) toward the intended target. **WARNING: Do not lift the Rock BR by the Cradle/Windage Plate assembly. Lift only by grasping the Base legs.**
3. Level the Rock by means of the Adjuster Feet until the bubble is centered in the Level. Tighten the Adjuster Foot Lock Nuts.
4. Elevation Adjustment. The Rock BR features two primary means of Elevation Adjustment, and one secondary.
 - a. Loosen the Coarse Center-Post Lock (lower knob) and lift the rest assembly to a position slightly below the general height desired. Tighten the Coarse Center-Post Lock to secure the rest at this height.
 - b. For Finer Adjustments, loosen the Fine Center-Post Lock and use the Fine Elevation Adjustment Wheel to raise and lower the rest assembly. Turn to the left to raise the rest assembly or to the right to lower. Tighten the Fine Center-Post Lock to hold this position.
 - c. Very Fine Adjustments can be made by loosening the rear Adjuster Foot Lock Nut and turning the Adjuster Foot clockwise to raise and counter-clockwise to lower. (Doing this will cause the Bubble Level to no longer show level).
5. Windage Adjustments are made by rotating the Windage Screw Knob clockwise to move to the right and counter-clockwise to move to the left. Coarse changes in windage can also be made by shifting the rear leg of the Base to the left or right.
6. Place the rifle forend between the ears of the front rest Bag so the forend of the stock rests firmly against the Forend Stop. This may require that the height of the Stop be adjusted. NOTE: The Forend Stop is designed to aid in repeatable positioning of the rifle from shot to shot. It is intended that the shooter position the rifle so that the very end of the rifle's forend makes positive contact with the Stop. Repeating this step prior to each shot being fired assures that the contact point with the front rest is the same throughout the entire string of shots. Performing this procedure helps to eliminate the variability in impact due to inconsistent placement of the forend on the rest. Rifles featuring Mannlicher-style stocks, or original military rifles with long forends may not be able to take advantage of this feature. In those circumstances, it is recommended that you remove the Stop from the rest, or lower it until it is out of the way.
7. If you wish to use a rear Bag, position it under the rear of the rifle's buttstock so the toe of the buttstock overhangs the Bag by approximately 1".
8. Use the Cradle Ear Lateral Adjustment Screws and Nuts to locate the Cradle Ear Plates against the sides of the front rest Bag. Make use of the Bag Tension Screws to tighten the front rest Bag against your rifle's forend. Tighten the Bag just enough to prevent side-to-side movement of the rifle forend. The rifle forend should still be able to easily slide forward and backward. Periodically dusting the Bag with a small amount baby powder aids in reducing friction.
9. Make sure all Adjuster Foot Lock Nuts and Center-Post Locks are secure before actually firing from the Rock BR.

Bag Filling:

We recommend dry silica sand for either the 3-lobe Bag or any Deluxe Front Rest Bags.

1. Remove Bag spouts from spout pocket. (3-lobe Bag features an unstitched portion for filling)
2. Fill the Bag through the spout. Filling is made easier if a rigid tube such as a large rifle cartridge case with the head removed or a small funnel is inserted in the filling spout. This will keep the spout open during filling.
3. A small, flat-faced rod may be inserted in the spout to help pack the filler if desired.
4. When the Bag has been filled to your satisfaction, fold the spout over and tuck under the pocket.

Maintenance:

The Rock BR base is fabricated of ductile cast iron and powder coated. All machined components are stainless steel or aluminum alloy. No lubrication is needed at the contact points between the Cradle Plate and the Windage Plate. For ease of operation, a small amount of grease should be applied to the threads of the Adjuster Feet, Lock Nuts, and the Fine Center-Post and its Elevation Wheel, the mating components of the Base and the Coarse Elevation Center-Post, and on both sides of the Thrust Bearing. Periodically check the tightness of the Cradle Plate Attachment Screw (Z). Use a thread-locking compound to ensure its security.

Limited Warranty

Every Caldwell product is warranted to be free of defects in materials and workmanship for a period of one (1) year from the date of original purchase. Caldwell will, at its option, repair or replace without charge, except for transportation costs, parts that fail under normal use and service when operated and maintained in accordance with our Instructions. This warranty does not apply to normal wear or to items whose life is dependent upon their use and care. This warranty is in lieu of all other warranties, expressed or implied and releases Caldwell, its affiliates, and its vendors from all other obligations and liabilities.

Product # 440-907

A **Battenfeld**™ Product
Technologies, Inc.

5885 W Van Horn Tavern Rd.
Columbia, MO 65203
www.caldwellshooting.com

Instructions # 627-471

Caldwell™
Shooting Supplies

“The Rock BR”



Instructions for Assembly and Use

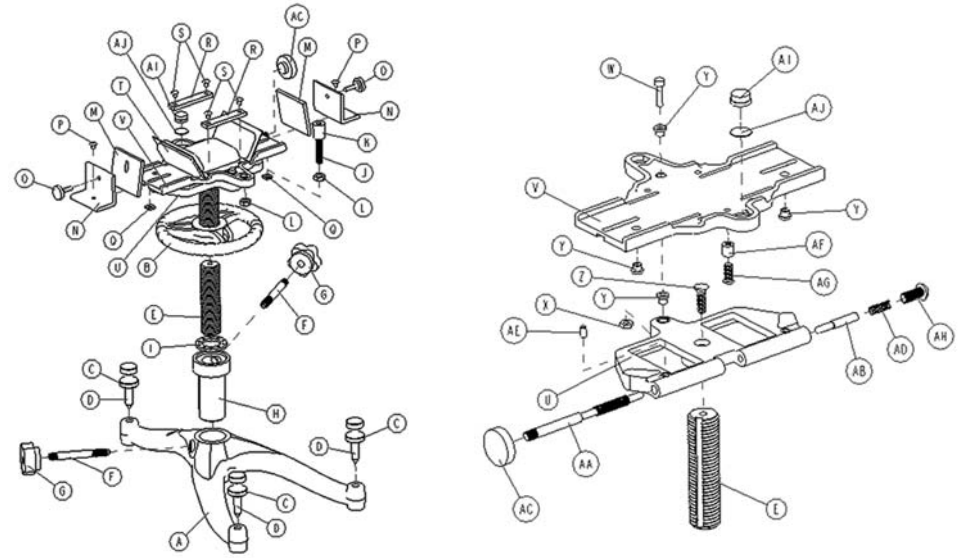
Thank you very much for your purchase of the Caldwell Shooting Supplies Rock BR. For purposes of secure shipment, the Rock BR comes to you partially disassembled. Please review the following steps for assembly before actually beginning the assembly process. Because Caldwell continually makes improvements in component design, individual parts may look different from those pictured.

Remove all components from the shipping container. The package should contain the following:

View #	Qty.	Prod. No.	Component Name
A.	1	872571	Base
B.	1	162460	Fine elevation adjustment wheel
C.	3	318007	Adjuster foot lock nut
D.	3	514411	Adjuster foot
E.	1	672837	Fine adjustment center-post
F.	2	401277	Center-post lock
G.	3	249338	Center-post lock knob
H.	1	729169	Coarse adjustment center-post
I.	1	628620	Thrust bearing
J.	1	562136	Forend stop screw
K.	1	194088	Forend stop bushing
L.	2	193503	Forend stop nut
M.	2	533312	Cradle ear plate
N.	2	178833	Cradle ear
O.	2	715398	Bag tension screw
P.	2	481393	Cradle ear lateral adjustment screw
Q.	2	302346	Cradle ear lateral adjustment nut
R.	2	106759	Bag strap
S.	4	237207	Bag strap hold-down screw
T.	1	427144	3-lobe bag
U.	1	603158	Cradle plate
V.	1	528919	Pivot plate
W.	1	311206	Pivot plate screw
X.	1	860946	Pivot plate nut
Y.	4	659626	Pivot shoulder washer
Z.	1	644688	Cradle plate attachment screw
AA.	1	330104	Windage screw
AB.	1	549939	Windage detent
AC.	1	683865	Windage screw knob
AD.	1	569480	Windage spring
AE.	1	438421	Windage set screw
AF.	1	377259	Windage pivot bushing
AG.	1	173746	Pivot bushing screw
AH.	1	230925	Plunger capture screw
AI.	1	807913	Bubble level
AJ.	1	108675	Bubble level adhesive foam

Assembly process:

1. Thread each Adjuster Foot (D) through an Adjuster Foot Lock Nut (C.) approximately half the length of the threaded shaft.
2. Screw a Foot and Nut assembly into the holes at the end of each Base (A.) leg. It is not necessary for the pointed tip of the Foot to extend through the Base during the assembly procedure or while the Rock BR is being transported to and from the range.
3. Thread a Center-Post Lock (F.) into the threaded hole provided on the side of the Base upright just short of the tip of the Lock protruding into the Coarse Adjustment Center-Post hole.



4. Slide the Coarse Adjustment Center-Post (H.) into its corresponding hole in the Base, aligning the slot in the side of the Post with the tip of the Lock.
5. Tighten the Center-Post Lock sufficiently to secure the Coarse Adjustment Center-Post.
6. Thread the remaining Center-Post Lock into its corresponding hole in the side of the Coarse Center-Post just short of the tip of the Lock protruding into the Fine Adjustment Center-Post hole.
7. Position the Thrust Bearing (I.) into its recess in the top of the Coarse Adjustment Center-Post.
8. Thread the Fine Elevation Adjustment Wheel (B.) onto the Fine Adjustment Center-Post (E.), (the windage and cradle assemblies are factory-installed on the Fine Adjustment Center-Post) approximately one-half the length of the shaft.
9. Slide the fine adjustment center-post (E.), with the factory-installed windage and cradle assemblies attached, through the thrust bearing and into its corresponding hole in the coarse adjustment center-post, aligning the slot in the side of the Post with the tip of the Lock.
10. Tighten the Center-Post Lock sufficiently to secure the Fine Adjustment Center-Post.
11. Thread a Forend Stop Nut (L.) onto the shaft of the Forend Stop Screw (J.) to a point approximately half the length of the shaft.
12. Insert the shaft of the Forend Stop Screw into its corresponding hole in the Cradle Plate (U), aligning the Nut to fit into the six-sided recess.
13. Secure the Forend Stop to the Cradle Plate by threading the other Forend Stop Nut onto the shaft from the underside of the Cradle Plate.
14. Expose the adhesive on one side of the Bubble Level Adhesive Foam (AJ.) and attach to the underside of the Bubble Level (AI.).
15. Expose the other side of the Adhesive Foam and attach the Bubble Level to its corresponding recess in the Cradle Plate.
16. Insert a Cradle Ear Lateral Adjustment Screw (P.) through the unthreaded hole in a Cradle Ear (N.). Attach the Cradle Ear to the Cradle Plate using a square Cradle Ear Lateral Adjustment Nut (Q.), the vertical portion of each Cradle Ear toward the center of the Cradle. Align the Nut within the slot provided. Leave loose for later adjusting. Attach second Cradle Ear in the same manner.
17. Align the die-cut holes in the filled 3-lobe Bag (T.) (see Bag Filling procedure below) with the corresponding holes in the Cradle Plate. **NOTE: Any of the Caldwell Deluxe Front Bags may be substituted for the standard 3-lobe Bag. If you intend to use a Deluxe Front Bag, ignore steps 16. and 17. and secure the Deluxe Bag in place by lacing the hook and loop tabs through the slots provided in the Cradle Plate.**
18. Place a Bag Strap (R.) over the edge of the Bag and secure by inserting a Strap Hold-Down Screw (S.) through the holes in the Strap and the Bag and threading into the Cradle Plate. Repeat for the opposite side of the Bag.
19. Thread a Bag Tension Screw (O.) through each Cradle Ear from the outside toward the center of the Cradle.
20. Slip a Cradle Ear Plate (M.) between each end of the Bag and the Cradle Ears. Each Cradle Ear Plate has a short, off-center slot milled in it. Orient the slot vertically, so it is in the top half of the Plate, facing the tip of the Bag Tension Screw. The tip of the Bag Tension Screw should engage the slot in the Plate.